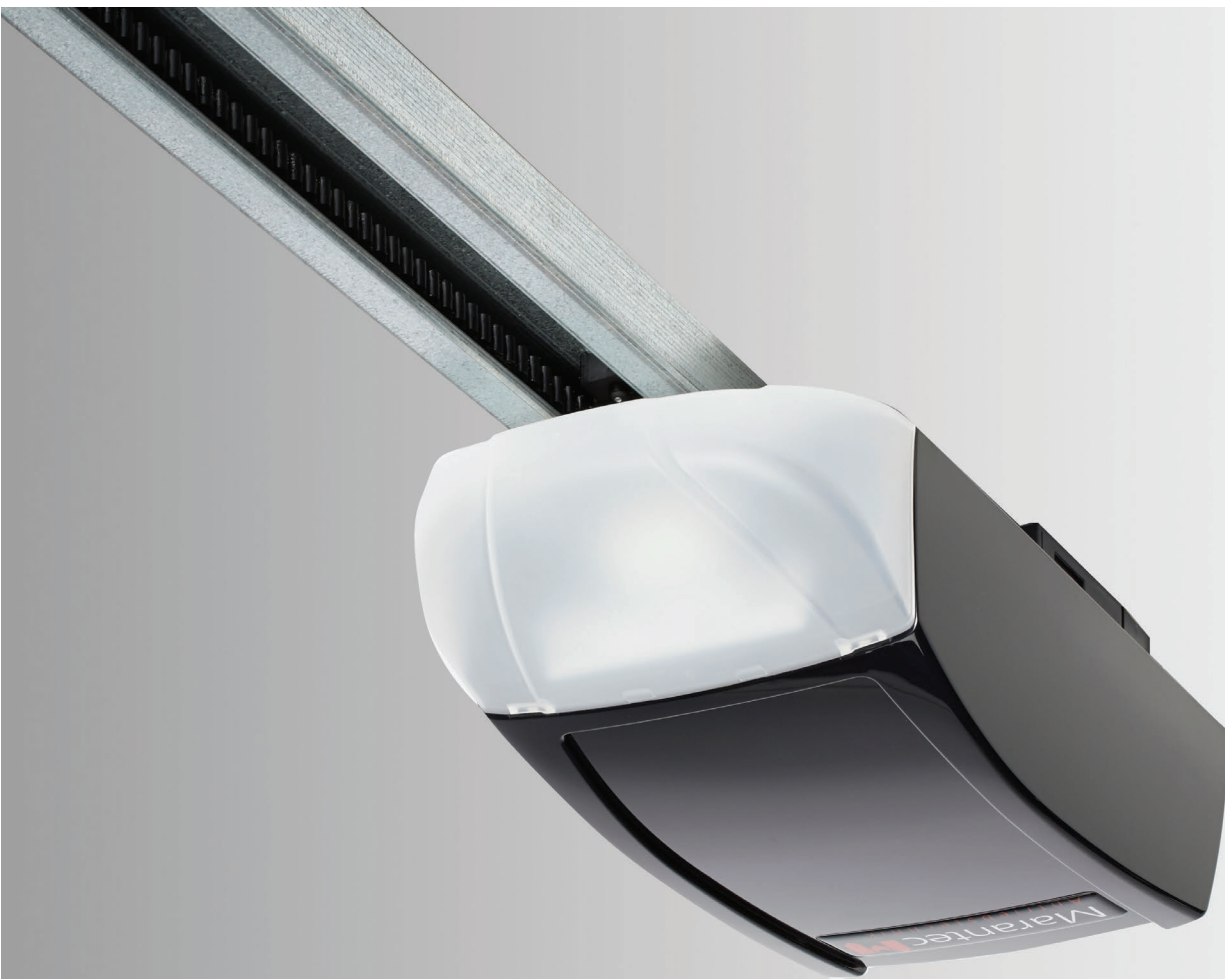


# Synergy 280



## The new Synergy Collection of garage door openers. *Faster, Brighter, Smarter, Stronger, Ultra Quiet.*

The Synergy 280 is a feature-rich garage door operator system, built to last and guaranteed to provide years of smooth, trouble-free performance. Innovative LED lighting and reduced stand-by consumption make the Synergy 280 the most efficient residential garage door opener available, while the direct current (DC) Smart Motor®, coupled with a chain or belt drive system, ensures an amazingly quiet operation.



Limited Lifetime Warranty  
on Motor, Gear Assembly  
and Rail System. 4-year  
Limited Parts Warranty

**Marantec**   
Antriebstechnik

[www.marantec.com](http://www.marantec.com)

## Synergy 280 Specifications

### LED Lighting System



Integrated seamlessly into the motor housing, LED lighting comes standard with every Synergy operator. The lens covers are completely enclosed, meaning no unsightly dirt and bugs under the light covers



- LED lighting 80% – more efficient than incandescent light bulbs
- Longevity – LEDs have a lifespan of over 30,000 hours.
- Cool Operation – LED modules create more light, while emitting less heat.

### Accessories



#### Transmitters

Two styles of digital remote control transmitters in three different configurations: 2-channel MINI, 4-channel MINI (optional), and 3-channel MICRO (optional) remotes for controlling other devices. Unique and extremely secure multi-bit code technology.



#### Modular Multi-Function Wall Station

Provides door operation and convenience from inside the garage. Compact, stylishly designed to fit in a standard single gang electrical box. Illuminated push-button. Security vacation/lock switch. Light control. Individual control stations can be combined into one solid panel.



#### Wireless Keyless Entry System (optional)

Convenient, 4-digit PIN. Controls up to 4 different garage doors. Code security. Weather resistant. Can be programmed to provide temporary access to authorized visitors or service personnel.

### Operator Features

- DC motor provides for amazingly quiet operation
- Opening and Closing Speed: 6.3 in/sec max
- Push & Pull Force: 1000 Newton (1.0 HPCS™)
- Garage door opener is self-learning the operating force necessary to open and close the garage door. Independently from the operating force, the opener system monitors for obstructions during door travel.
- Sealed motor gear case provides continuous lubrication to ensure a long service life and smooth, trouble-free operation.

### Radio Controls

- Frequency: 315MHz, Homelink® compatible
- Technology: Multibit code

### Lighting System

- LED lighting system (included)
- 378 lumens expandable to approximately 756 lumens
- Time controlled - lighting duration is programmable

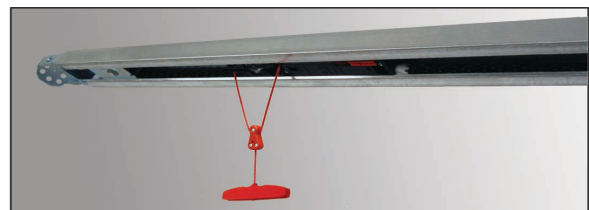
### Photo Eyes Safety System

State-of-the-art photo eye safety system detects obstructions in the path of the door and automatically stops and reverses the downward door travel. Safety when you need it most.

### Warranty

**Limited Lifetime Warranty on Motor, Gear Assembly and Rail System.**  
**4-year Limited Parts Warranty**  
**5-year Limited Warranty on LED Lighting System**

### Drive System



### Rail

**The best in advanced engineering and materials. One piece semi-closed fully assembled drive system with a high strength galvanized steel finished C-rail, available with a steel-reinforced belt or a full steel chain. A revolutionary trolley release mechanism helps to prevent garage break ins.**

Drive system's overall length with attached operator 7ft. door: 10'- 6.25"

Door Heights Supported: 7ft, 8ft, 10ft, 12ft, 14ft.

Headroom Clearance Required: 1.25 inches

Trolley: Includes emergency release, easy reconnect, vault release compatibility



**Marantec**  
Antriebstechnik

Marantec America Corporation  
5705 Centerpoint Court • Gurnee, IL 60031  
p. 847.478.1500 • f. 847.478.0348

[www.marantec.com](http://www.marantec.com)